

Pathways to Protection

Supporting people's safety along migration routes

Snapshot

A Whole-of Route-migration programme implemented by Danish Refugee Council, Danish Red Cross and the International Detention Coalition

Implementation period 2024 - 2029

Countries of implementation
Mali, Niger, Senegal, Morocco, Tunisia, Libya, Egypt, Chad, Sudan and Türkiye

Funded by the Danish Ministry of Foreign Affairs



Photo Credit© Sara Creta

Pathways to Protection at a Glance

The Pathways to Protection (P2P) Consortium, led by the Danish Refugee Council in partnership with the Danish Red Cross and the International Detention Coalition, is a five-year initiative designed to strengthen protection services and systems for people on the move along key migration routes.

By adopting a *Whole-of-Route Approach*, P2P facilitates access to essential services, including basic humanitarian assistance and protection services, throughout migration journeys. P2P also enhances the protective systems and environments of communities, while promoting access to accurate information, to rights, and pathways for people on the move. The programme offers an adaptive management approach to ensure interventions meet the evolving and complex needs of people on the move.

Working across Mali, Niger, Senegal, Morocco, Tunisia, Libya, Egypt, Chad, Sudan and Türkiye, P2P emphasises rights-based and locally led solutions. P2P works closely with and empowers local communities and duty bearers through capacity building, targeted advocacy, peer learning, and alignment with regional and global frameworks for sustainable impact. The programme further leverages the local to global strength of the Red Cross/Red Crescent network. **P2P paves the way for lasting impact, access to rights, protection and safer futures for people on the move.**

Strategic Context and Rationale

The Mediterranean migration routes present complex challenges for people on the move, including exploitation, detention, gender-based violence, and lack of access to services including protection.

- **Central Mediterranean Route:** Sudanese, Pakistani, Syrian and other refugees and migrants from Sub Saharan Africa, Middle East and Asia facing detention, exploitation, and overstretched systems in Egypt, Libya and Tunisia.
 - **Western Mediterranean Route:** People on the move from West and North Africa, mainly from Senegal, Chad, Niger and other countries navigating dangerous sea crossings and systemic barriers in Mali, Algeria, and Morocco.
 - **Eastern Mediterranean Route:** People on the move from Asia, Middle East, and North and East Africa exposed to overcrowded camps, detention, exploitation, and limited-service availability in Türkiye.
-

Core Components

At its heart, the P2P programme enhances the protection environment by bolstering the agency of people on the move, addressing needs, and strengthening local protective capacities and approaches.



Adaptation and Sustainability

The P2P programme emphasises long-term impact through:

- **Localisation:** Partnering with at least 18 national and local organisations, including Red Cross and Red Crescent National Societies, local CSOs and CBOs to promote locally led solutions and delivery.
- **Systems Strengthening:** Supporting local actors to lead protection efforts independently.
- **Adaptiveness:** Based on real-time data and analysis generated by the Mixed Migration Centre's 4Mi data collection initiative, ensuring responsive and culturally appropriate interventions.

- **Scalability:** Developing and utilising tools and approaches for information-sharing, service delivery and advocacy that can be scaled and replicated to new and changing contexts including the use of multi sectoral and cross regional peer learning.
- **Alignment:** Coordinating closely with key actors such as IOM and the UNHCR at local and global levels and in full alignment with the Global Compact for Safe, Orderly, and Regular Migration.

Leveraging the Strengths of Consortium Partners

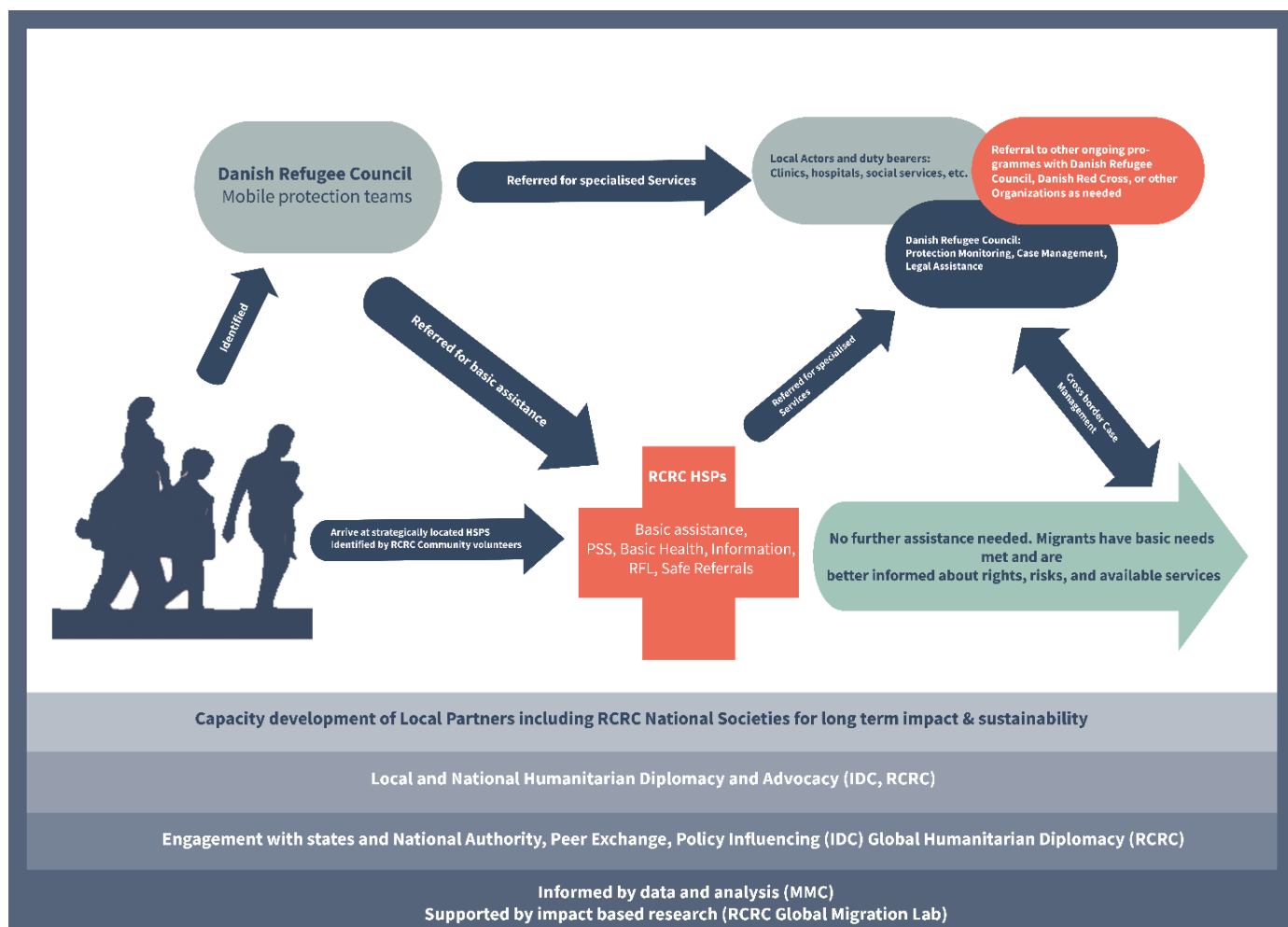
The Danish Refugee Council, the Danish Red Cross, and the International Detention Coalition Consortium combines extensive experience across migration routes:

Danish Refugee Council: Expertise in mixed migration programming, evidence-based protection services, and diaspora engagement, with significant research and analysis capacities in the Mixed Migration Centre. Operationally present along the major migration routes.

Danish Red Cross: Long-term partnerships with the Red Cross/Red Crescent National Societies with well-placed network of Humanitarian Service Points and contributing to IFRC's Global Routes-Based Migration programme. Operationally present along the major migration routes.

International Detention Coalition: The International Detention Coalition has built strong relationships with duty bearers along key migration routes and globally. It leads efforts on alternatives to detention and pathways, with a proven track record of utilizing peer-learning platforms to influence policy at various levels.

In collaboration with at least 18 local partners and Red Cross Red Crescent Societies, the P2P programme comprehensively engages with and strengthens the protective environment for people on the move.



Current geographic scope

Working with and supporting local capacities, systems and actors, including the Red Cross/Red Crescent Movement's Humanitarian Service Points and DRC's Mobile Protection Units, P2P will facilitate humanitarian service delivery in hot spot locations in ten countries:



Opportunities for Scaling

The P2P programme is designed for scalability and replication in existing or new countries along main migration routes into Europe. For any further information please contact the P2P Chief of party: andrew.merata@drc.ngo